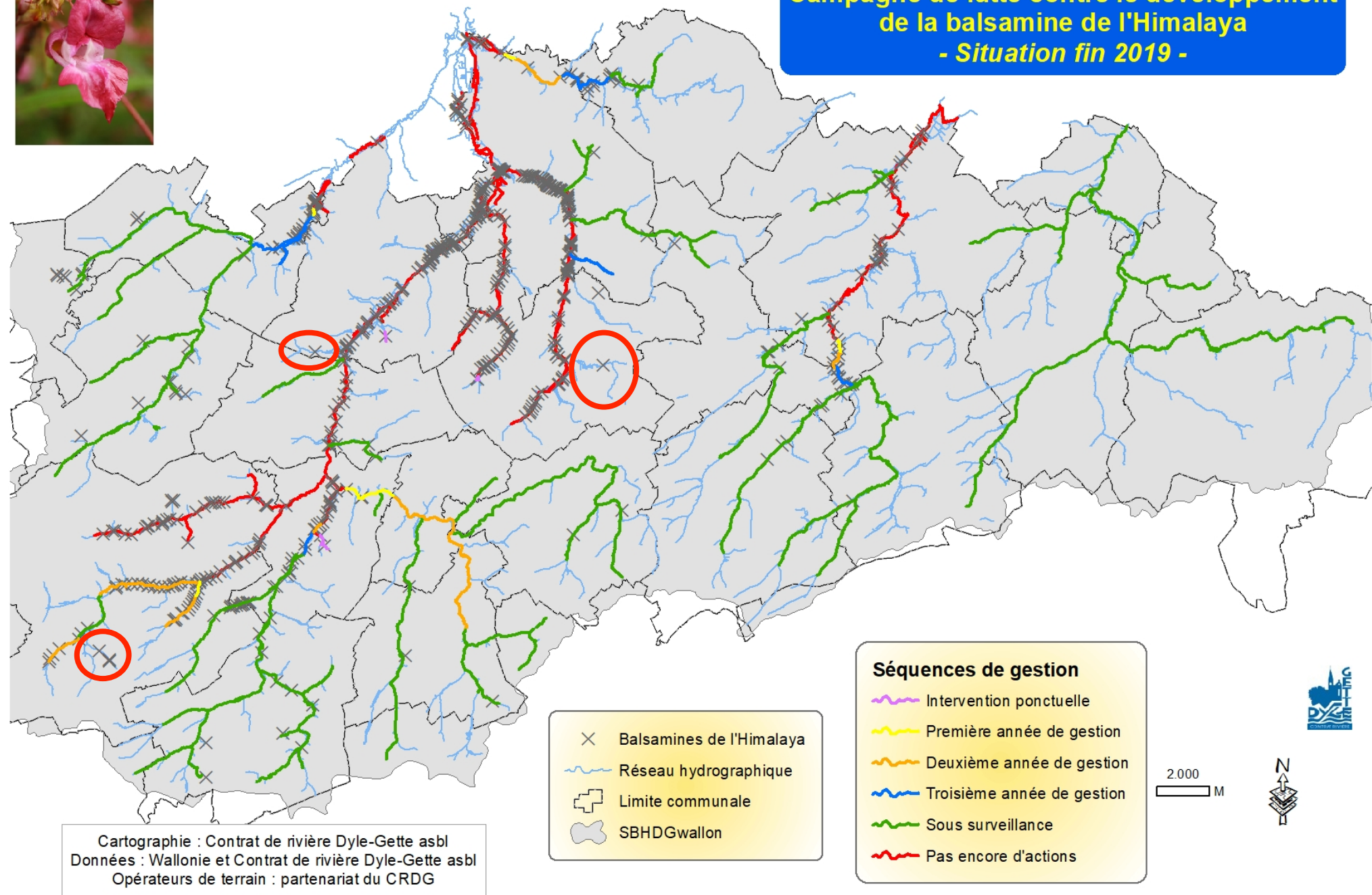
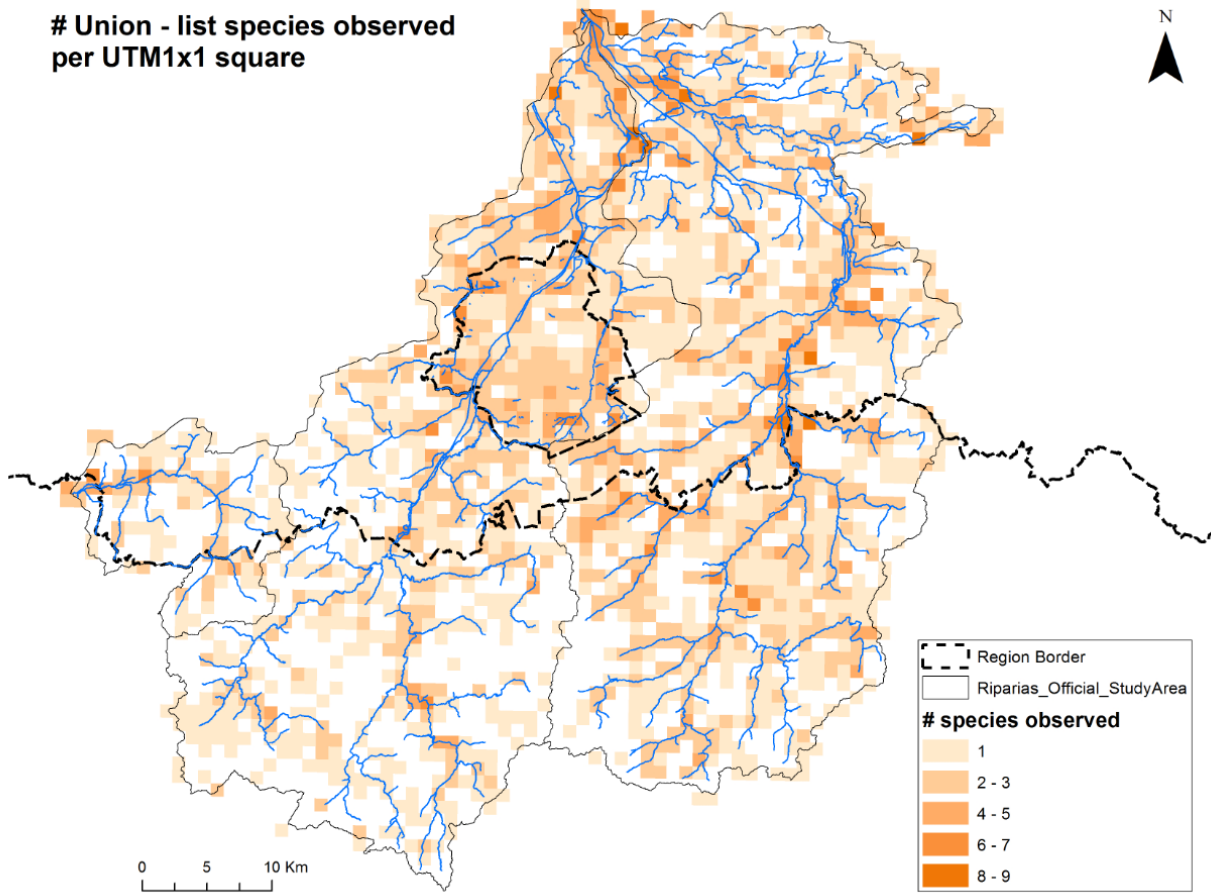




# Campagne de lutte contre le développement de la balsamine de l'Himalaya - Situation fin 2019 -



# Union - list species observed per UTM1x1 square



LIFE RIPARIAS

## Dijle river basin



### Legend

- Dijle/Dyle basin
- Regional borders
- Leuven
- Watercourse

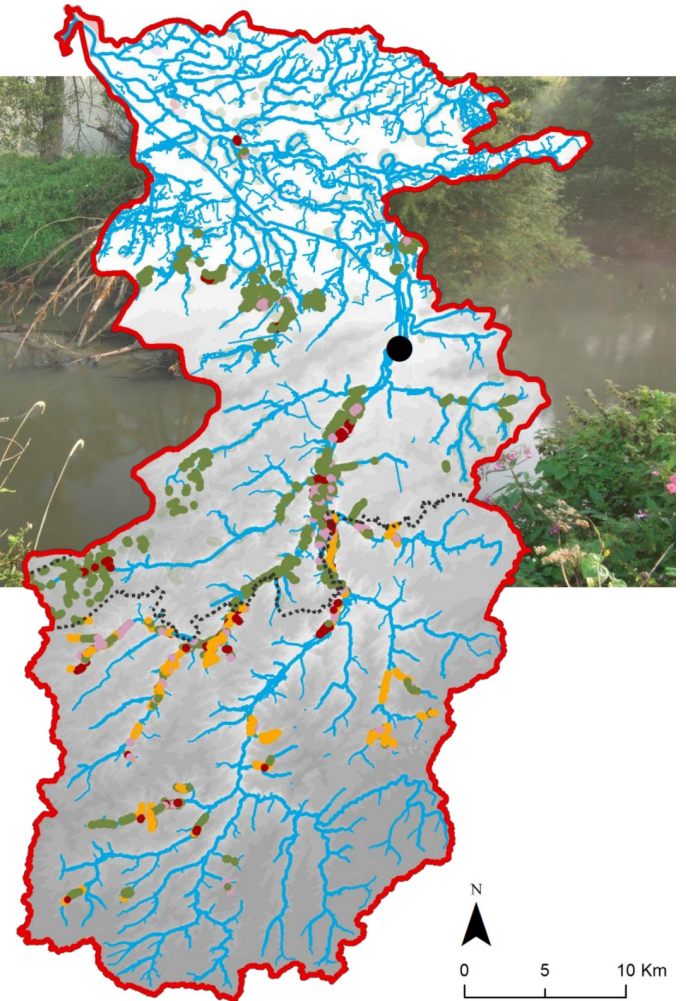
### Habitat at risk

#### Protected sites

- Standing water (3130, 3140, 3150)
- Stream habitat (3260)
- Riparian habitat (6430)
- Alluvial forest (91E0)

#### Additional actual habitat (Flanders)

- Standing water (3130, 3140, 3150)
- Riparian habitat (6430)
- Alluvial forest (91E0)



# Etalement du projet



Giant Hogweed  
(*Heracleum mantegazzianum*)

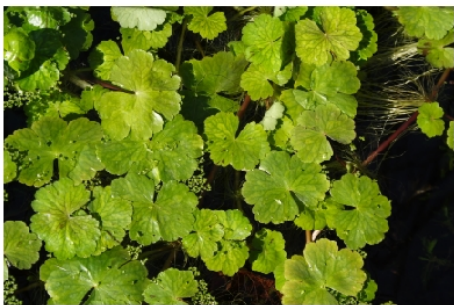


Himalayan balsam  
(*Impatiens glandulifera*)

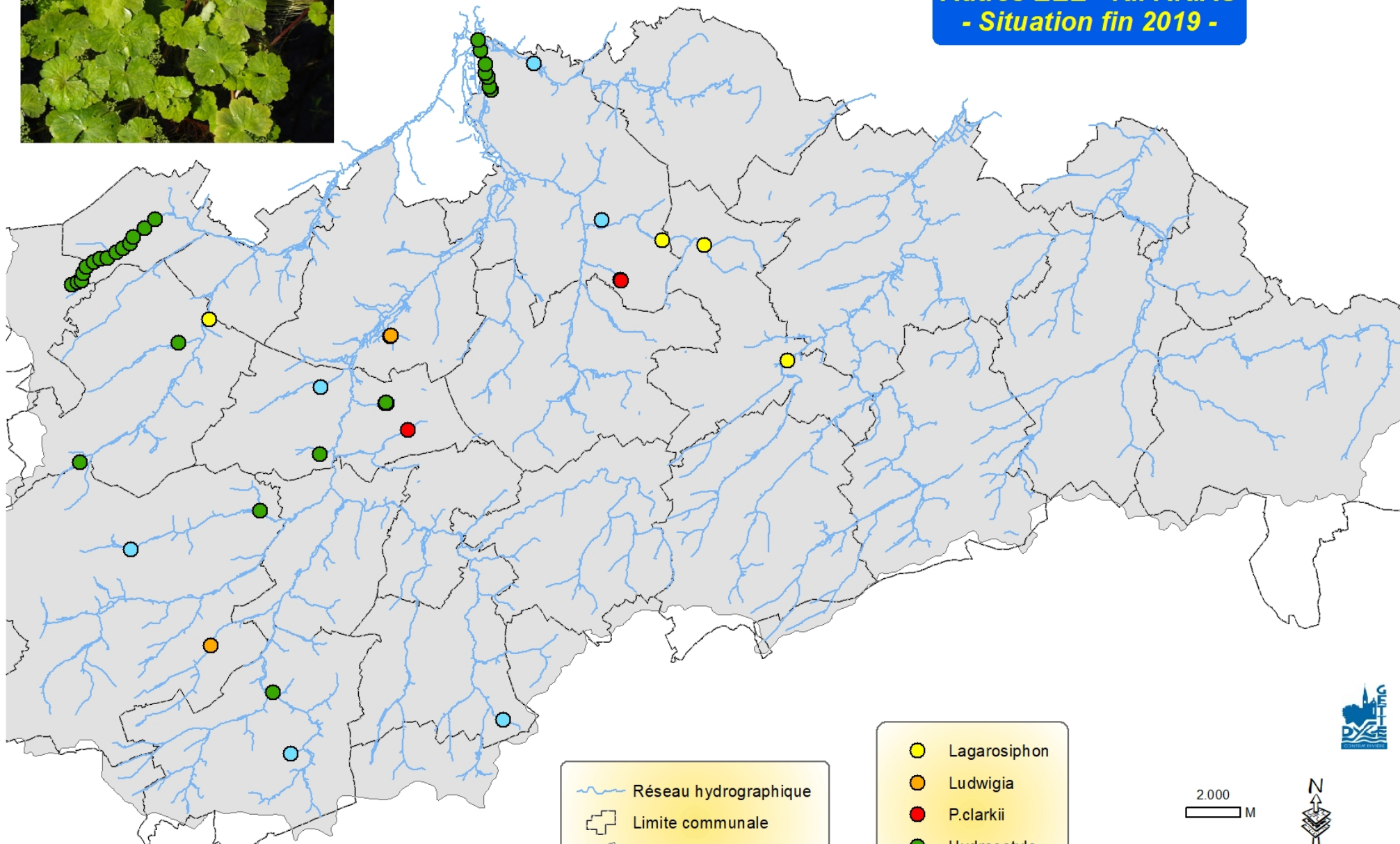


	2020	2021				2022				2023				2024				2025				2026							
	T4	T1	T2	T3	T4	T1	T2	T3	T4	T1	T2	T3	T4	T1	T2	T3	T4	T1	T2	T3	T4	T1	T2	T3	T4				
<b>Surveillance - CE/mares</b>																													
C.1.1 Enhanced surveillance by citizen science																													
C.1.2 Systematic plant surveillance in the																													
C.1.3 Surveillance in isolated ponds																													
<b>Eradication précoce - EEE émergentes</b>																													
C.2.1 Rapid eradication of plant populations																													
C.2.2 Rapid eradication of crayfish populations																													
<b>Gestion récurrente - EEE largement réparties</b>																													
C.3.1 Containment into core areas																													
C.3.2 Containment outside pest free areas																													





**Autres EEE - RIPARIAS**  
**- Situation fin 2019 -**



Cartographie : Contrat de rivière Dyle-Gette asbl  
Données : Wallonie et Contrat de rivière Dyle-Gette asbl  
Opérateurs de terrain : partenariat du CRDG

- Réseau hydrographique
- ⊕ Limite communale
- SBHDGwallon

- Lagarosiphon
- Ludwigia
- P. clarkii
- Hydrocotyle
- Myriophylle

2.000  
M

